

Art. 011019-R-PFA CASSETTA ROBINIA PFA

150 x 180 h 200 cm

450 x 480

4

2-10

H. C. 0

Inclusive house in Robinia wood. It can be installed alone or in addition to figurative paths or "villages" made up of several houses.

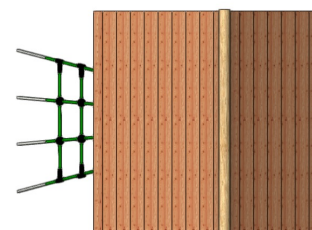
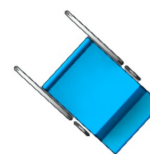
It can be installed alone or in addition to figurative paths or "villages" made up of several houses. The house is designed to also be accessible to wheelchair users. It features an inclusive interaction panel, a role-playing bench and a distinctive asymmetrical gable roof. The supporting structure of the game is made of Robinia trunks with an irregular diameter of 14-16 cm. The structure must be fixed to the ground using metal brackets provided. For inclusive play areas it is suggested to provide solid flooring.

Built in Robinia wood harvested in a controlled and sustainable way. The wood is debarked, sapwood removed, sanded and worked by hand to create durable and safe equipment, in compliance with UNI-EN-1176.



Inclusive play:

Having fun together in the same space is the fundamental concept of this inclusive playground. Role-playing games such as shop and theater become the aggregating activity for users with any ability.



Being made of natural Robinia, this article may present a superficial cracking over time which does not cause any problems of durability, functionality and safety.



This item contains a percentage of plastic lower than 1% of the total weight of the structure

PRODUCT PASSPORT

Art. 011019-R-PFA Casetta Robinia Pfa



EMISSIONS AVOIDED:

Local wood Kg: 1,5

Use of clean energy, Kg: 14,9

CO2 storage, Kg: 170,0

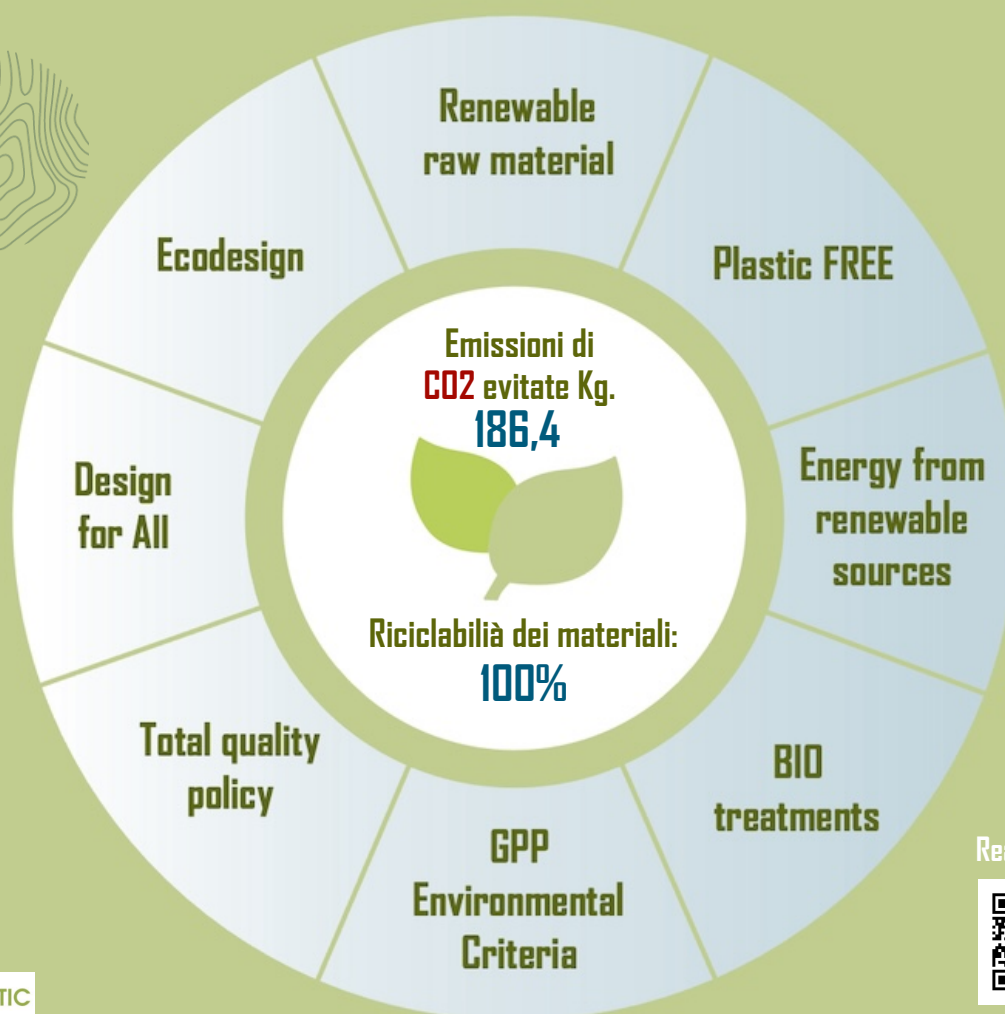
Bio treatments, Kg: 0,0

Measures:
150 x 180 H 200 cm

Safety Area:
450 X 480

Fall height:
0

Age:
2-10



Read more...



www.legnolandia.com