


Art. 011577

TREE CASTLE 10

 **473x750 h378 cm**

 **821x1052 cm**

 **14**

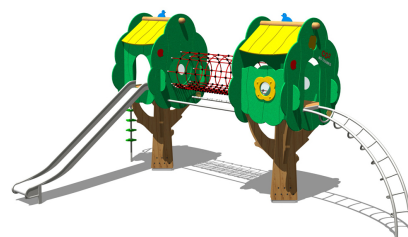
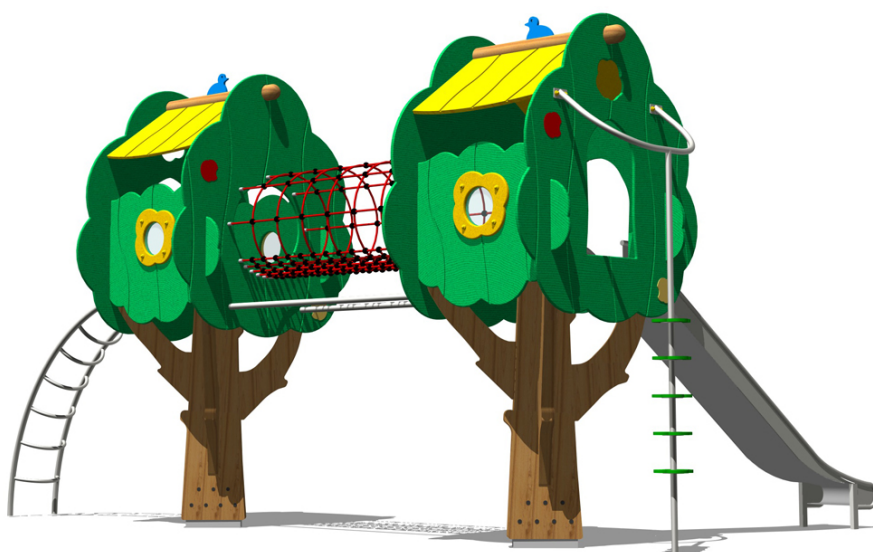
 **3 - 12**

H. C. 200

Tree-castle with two treeformed towers with roofs. It can be accessed by a stainless steel arched ramp with square net. The wide platforms are posed at 200cm from the ground. The castle includes: a 450cm stainless steel slide, a stainless steel pole with discs, one suspension tunnel made of rope which connects the towers. The trunks of the trees are made of laminated wood 18x50 cm with 9 cm thick branches. Ground connection by a galvanized steel bracket which keeps the timber lifted off the ground. The raised platforms are made of laminated beams section 9x9 cm and 3.5 cm thick planks. The panels that make up the crown are made of laminated wood thickness 27 mm with decorations and windows.

The colour of this playground is specifically designed to be inserted correctly into the natural areas of public parks, schools and parks.

All wooden parts are made of FSC- PEFC certified wood, treated under pressure in according to the EN 351 standards with UV protection. Complies to EN 1176 (European Standar for Playgrounds Equipment and Surfacing.



This item contains a percentage of plastic lower than 1% of the total weight of the structure

PRODUCT PASSPORT



Art. 011577

Tree Castle 10

EMISSIONS AVOIDED:

Local wood Kg: 18,7

Use of clean energy, Kg: 197,3

CO2 storage, Kg: 1.600,0

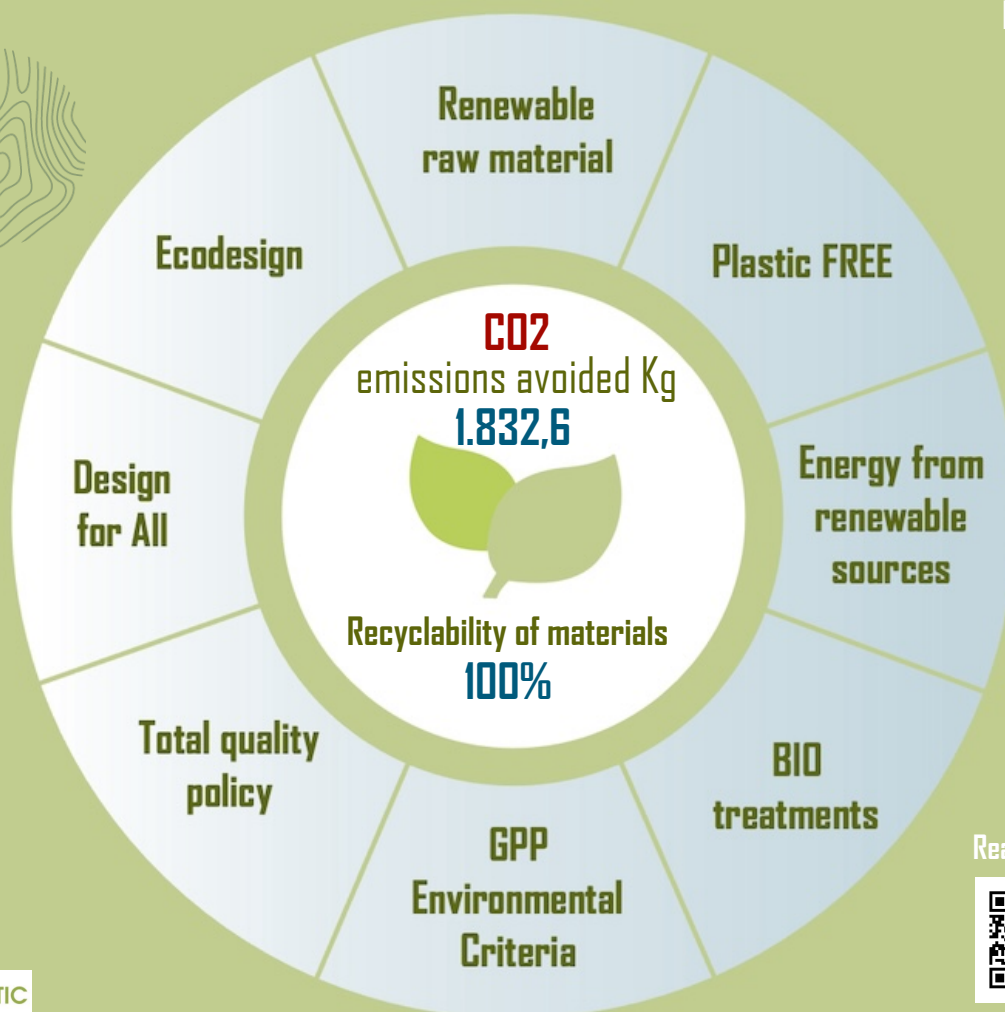
Bio treatments, Kg: 16,7

Measures:
473x750 h378 cm

Safety Area:
821x1052 cm

Fall height:
200

Age:
3 - 12



Read more...



www.legnolandia.com